
My Chart Patterns: Supernova

■ **Overview:**

An explosion in stock price that creates many opportunities to buy on the way up and short sell on the way down before fading into oblivion over several weeks or months

■ **Symptoms:**

Can be triggered by anything: newsletter mentions, world events, message board hype, company news, etc.

■ **Diagnosis:**

They last longer and are much greater in magnitude than anybody thinks possible—be careful

■ **Treatment:**

Stocks experience massive volatility and liquidity so it's very easy to buy and short sell shares and why this is my all-time favorite chart pattern to trade

Chart Patterns: Supernova

YTBL (YTB International, Inc.) PINK

© StockCharts.com

2-Apr-2007 O 5.31 H 6.19 L 5.11 C 5.60 V 833.0K Chg +0.66 (+13.36%) ▲

YTBL (Daily) 5.60

Volume 833,030



Chart courtesy of Stockcharts.com

Chart Patterns: Supernova



Chart courtesy of Stockcharts.com

Chart Patterns: Supernova

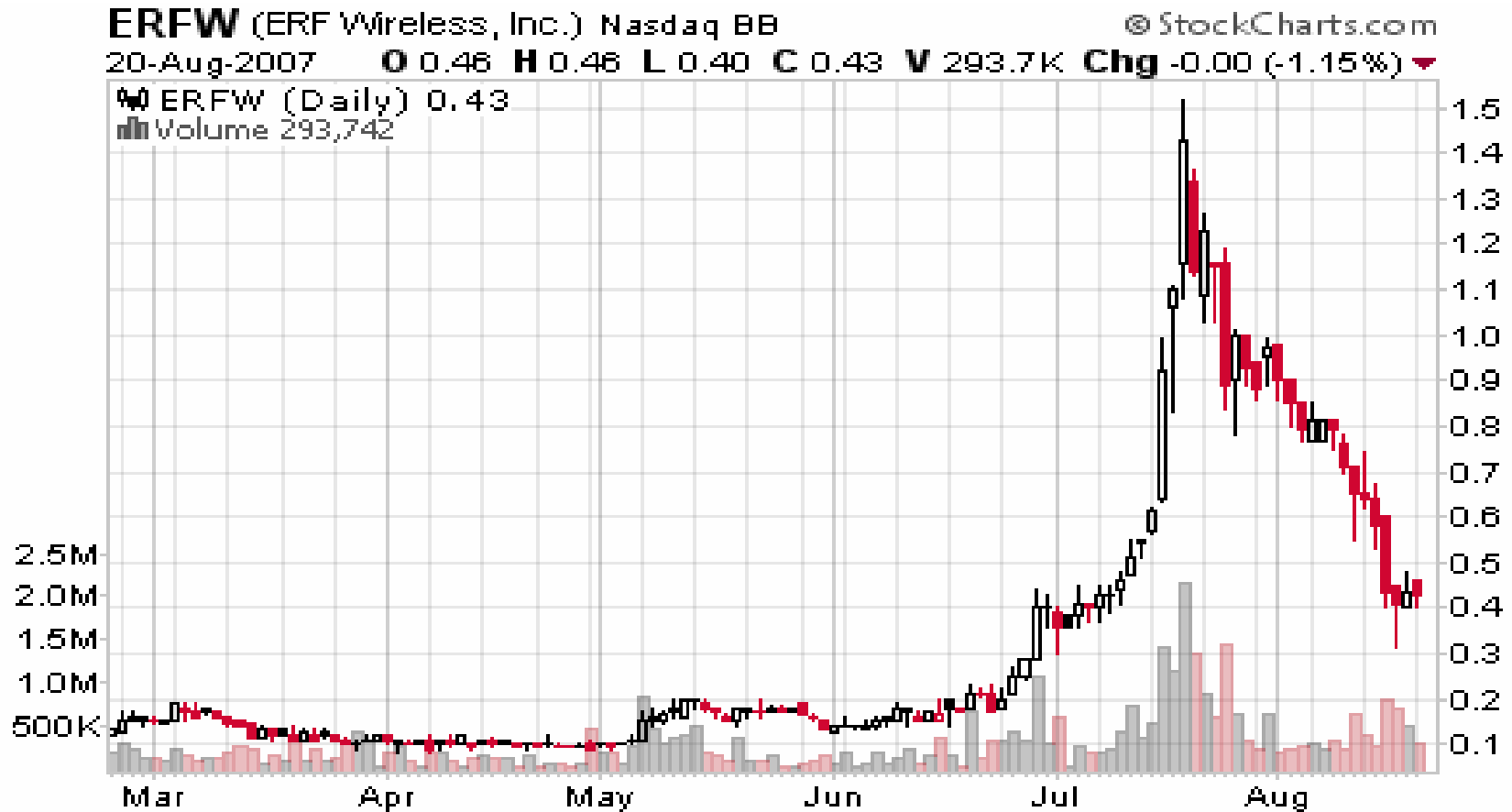


Chart courtesy of Stockcharts.com

Chart Patterns: Supernova

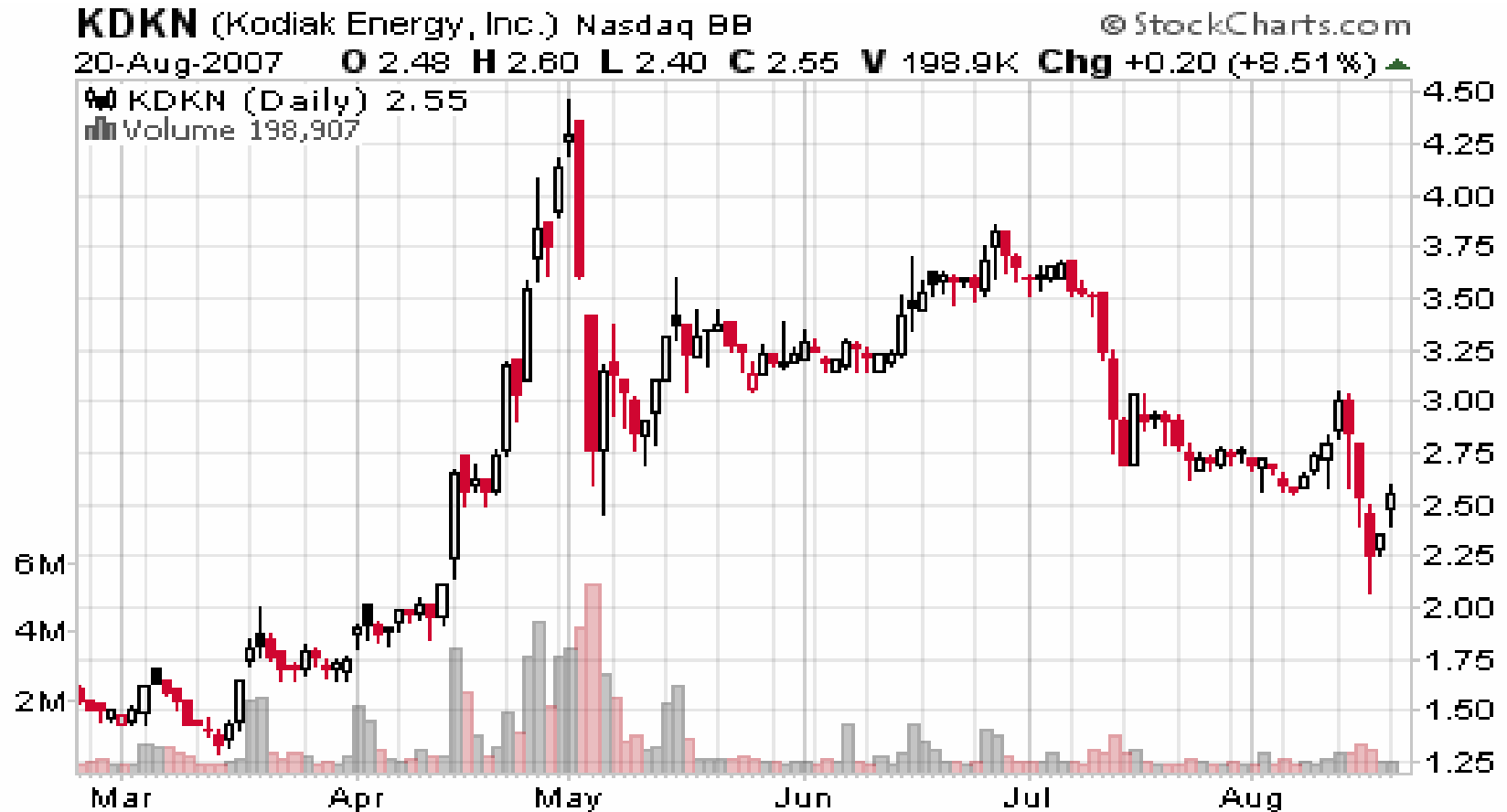


Chart courtesy of Stockcharts.com

Chart Patterns: Supernova



Chart courtesy of Stockcharts.com

Chart Patterns: Supernova



Chart courtesy of Stockcharts.com

Chart Patterns: Supernova

HOKU (Hoku Scientific Inc) Nasdaq GM © StockCharts.com
24-Aug-2007 O 8.33 H 8.47 L 8.13 C 8.39 V 542.2K Chg +0.12 (+1.45%) ▲



Chart courtesy of Stockcharts.com

Chart Patterns: Supernova

PLRO (Platinum Research Organization, Inc.) Nasdaq BB © StockCharts.com
2-May-2007 O 0.95 H 0.99 L 0.92 C 0.95 V 139.8K Chg -0.01 (-1.04%) ▼



Chart courtesy of Stockcharts.com

Chart Patterns: Supernova

MVBY (My Vintage Baby, Inc.) PINK

© StockCharts.com

24-Aug-2007

O 0.73 H 0.75 L 0.55 C 0.64 V 1.2M Chg -0.06 (-8.57%) ▼

MVBY (Daily) 0.64

Volume 1,224,776



Chart courtesy of Stockcharts.com